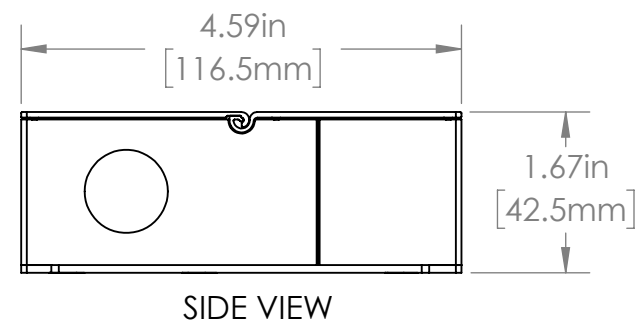


ISO VIEW



DRIVER SPECIFICATIONS		TOLERANCES	PROPRIETARY AND CONFIDENTIAL		NAME	DATE	Environmental Lights™		
NOMINAL INPUT VOLTAGE	110-277VAC		THE INFORMATION CONTAINED IN THIS DRAWING IS THE SOLE PROPERTY OF ENVIRONMENTAL LIGHTS. ANY REPRODUCTION IN PART OR AS A WHOLE WITHOUT THE WRITTEN PERMISSION OF ENVIRONMENTAL LIGHTS IS PROHIBITED.	DRAWN BY	J. PEREZ	5/11/2023			
MAX WATTAGE	30W			COMMENTS:					
NOMINAL VOUT	12VDC								
IP RATING	-								
CERTIFICATION	UL,cUL, CSA, FCC, ROHS								
							EL PART NO. DMU-12-30 - A1	REV A1	
							SCALE: 1:2	WEIGHT:	SHEET 1 OF 1